



# Glen Innes to Meadowbank Cycleway

The Glen Innes to Meadowbank project is a 4.3km off-road, shared path which will provide a direct cycle route connecting Auckland's eastern suburbs of Point England, Panmure and the current areas covered by the Auckland Manukau Eastern Transport Initiative (AMETI) to the Auckland CBD via Tamaki Drive.

The route is part of the Central Eastern journey corridor and will act as the backbone of the Auckland cycle network. It has been prioritised by Auckland Transport as a 'cycle metro' and assigned 'high' priority for implementation.

**Benefits:** Creates a safe cycle connection between Auckland's eastern suburbs and the city centre. Commuter cyclist numbers are expected to increase once the new cycle route is in place, alleviating congestion along the corridor.

Total cost estimate: **\$7.5 million**

Urban Cycleways Fund share  
\$1.5 million

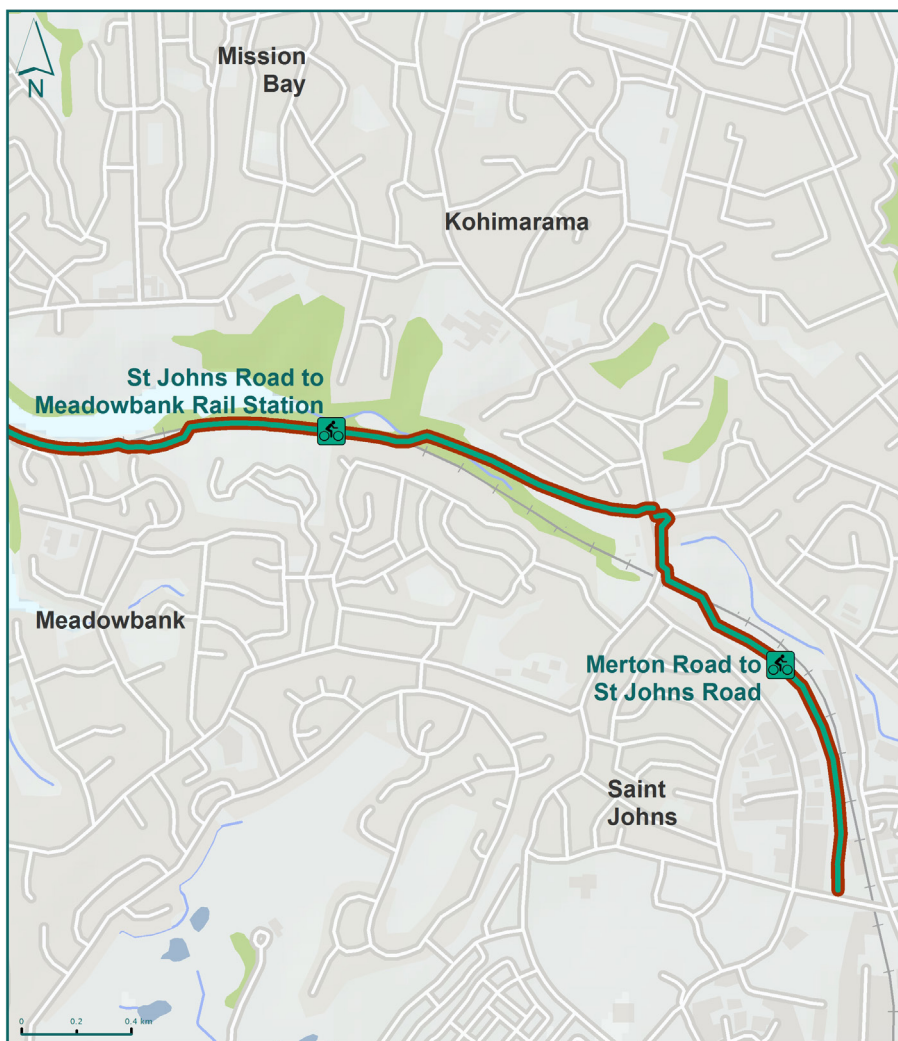
NLTF \$6 million

Target start date:

**March 2015**

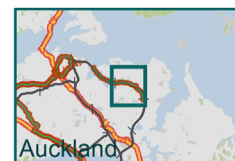
Target completion date:

**January 2016**



Glen Innes to Meadowbank Cycleway

 Urban Cycleway Funded Project



For more information, visit our website

[www.nzta.govt.nz/planning/process/walking-cycling.html](http://www.nzta.govt.nz/planning/process/walking-cycling.html)